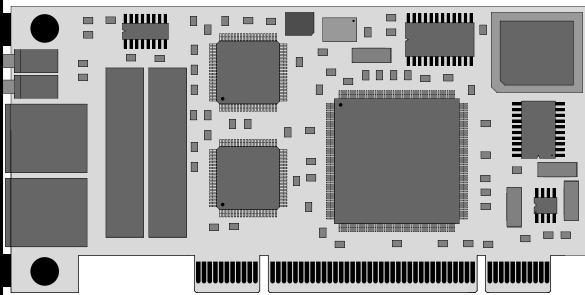


www.accoom.net

designed for OpenBSD



Order at
accoom.kd85.com

Accoom Networks

Accoom Artery

Single/Dual T1/E1 PCI Card

Physical:

- 1-2 RJ45 Connectors
- Low-Profile PCI Card

Electrical:

- 1-2 E1 120Ω Short-Haul (300 m)
- 1-2 T1 100Ω Short-/Long-Haul (655/6000 ft)
- 1.5kVrms Protection
- 3.3V/5V 32Bit/66MHz PCI Card

Line Codes:

- B8ZS
- HDB3
- AMI

Line Framing Formats:

- T1: T1.403, SF/D4, ESF, 1.544Mbps unframed
- E1: G.703, G.704, G.706, G.732, 2.048Mbps unframed

Operating Modes:

- Data unchannelized, fractional, channelized
- Voice PCM, PRI

Data Controller:

- 1-32 independent Channels (1-Port Version)
- 1-64 independent Channels (2-Port Version)

Line Protocols (selectable per Channel):

- Cisco HDLC
- Synchronous PPP
- Ethernet over E1/T1 (HDLC Encapsulation)
- Netgraph (FreeBSD only)
- Frame Relay (FreeBSD only)
- ASTERISK Primary Rate Interface E1/T1

Drivers available for:

- FreeBSD 5.4
- OpenBSD 3.7
- NetBSD 2.0 (planned)
- Linux 2.6 (planned)

Accoom Clotbuster

5.6 Mbps G.SHDSL PCI Card

Physical:

- RJ45 Connector
- Low-Profile PCI Card

Electrical:

- G.SHDSL 2-wire
- 5.6Mbps at 2km/6.6kft*
- 4.6Mbps at 2.6km/8.6kft*
- 3Mbps at 3.5km/11.6kft*
- 2Mbps at 3.9km/13kft*
- 1Mbps at 5km/16kft*
- * depending on actual line conditions
- 3.3V/5V 32Bit/66MHz PCI Card

Line Codes:

- G.SHDSL 4/8/16/32 PAM
- G.HS Handshake
- Annex E & F
- others on request (HDSL2, SDSL/2B1Q, HDSL, IDSL)

Line Framing Formats:

- TDM Mode

Operating Modes:

- Data unchannelized, fractional, channelized

Data Controller:

- 1-32 independent Channels

Line Protocols (selectable per Channel):

- Cisco HDLC
- Synchronous PPP
- Ethernet over G.SHDSL (HDLC Encapsulation)
- Netgraph (FreeBSD only)

Drivers available for:

- FreeBSD 5.4
- OpenBSD 3.7
- NetBSD 2.0 (planned)
- Linux 2.6 (planned)

Available in June 05

€ 439 Single Port (excl. VAT)

€ 539 Dual Port (excl. VAT)

Available in August 05

€ 549 Single Port (excl. VAT)